

SOUTHEAST ASIA DESK



We serve companies from the most diverse segments with headquarters and operations in Southeast Asia: Singapore, Philippines, Indonesia, Malaysia, Thailand, and Vietnam. Our expertise involves deals in credit operations and M&A, especially sovereign and private equity funds. Among other services provided, we practice in the areas of:

- | Financing infrastructure and/or technology projects
- | Investments in energy and oil
- | Investments in agribusiness
- | Implementation or acquisition of industrial plants
- | Real Estate Developments
- | Consulting on environmental issues
- | Contract analysis

Highlights of our practice

We keep our professionals updated, seeking to broaden the technical knowledge and cultural experiences of those involved in each transaction.

We value multidisciplinary and have a team of specialists with strong relationships in the region, bringing together investors and companies with common interests and supporting the development of business with international strategies.

RELATED PARTNERS



ANA KARINA E. DE SOUZA

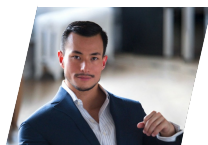
Partner / São Paulo

+55 11 3150-7000

anakarinasouza@machadomeyer.com.br



JOSÉ VIRGÍLIO LOPES ENEI
Partner / São Paulo
+55 11 3150-7000
jvirgilio@machadomeyer.com.br



THALES SAITO
Partner / New York
+55 11 3150-7000 / +1 (212) 784-8802
tsaito@machadomeyer.com.br

AWARDS



LEADERS LEAGUE

LEADERS LEAGUE - LEADERS LEAGUE ALLIANCE
SUMMIT: LAW & INNOVATION
Leaders League - Leaders League Alliance
Summit: Law & Innovation



THE LEGAL 500 - THE LEGAL 500 BRAZIL
AWARDS 2020/21
The Legal 500 - The Legal 500 Brazil Awards
2020/21



THE LEGAL 500 - TOP TIER
The Legal 500 - Top Tier



IFLR AMERICAS AWARDS - PROJECT FINANCE
DEAL OF THE YEAR COM O PROJETO DA LINHA 6
DO METRO DE SP
IFLR Americas Awards - Project Finance deal of
the year com o projeto da Linha 6 do metro de
SP

ACKNOWLEDGEMENTS



LATIN LAWYER - LATIN LAWYER 250
Latin Lawyer - Latin Lawyer 250



LATIN LAWYER - LATIN LAWYER 250
Latin Lawyer - Latin Lawyer 250



LATIN LAWYER - LATIN LAWYER 250
Latin Lawyer - Latin Lawyer 250



LATIN LAWYER - LATIN LAWYER 250
Latin Lawyer - Latin Lawyer 250